



**AKSHAR ARBOL
INTERNATIONAL SCHOOL**

nurturing young minds

ADMISSIONS GUIDE

2024 - 25

STAGES | PROCEDURES

**ALL PARENTS SEEKING ADMISSION AT
AKSHAR ARBOL INTERNATIONAL SCHOOL
(AAIS) ARE REQUESTED TO READ
THROUGH THIS GUIDE AND FAMILIARISE
THEMSELVES WITH THE STAGES AND
PROCEDURES.**

Our Vision

We foster continual learning for all, at all times.

Our Mission

We provide the best of contemporary educational practices in an atmosphere of cooperation and mutual respect, through experiential learning, for lifelong thinking and problem-solving.

The AAIS Path (पथ)

ASCEND

G11-12



AMPLIFY

G9-10



EMBARK

G6-8



LAUNCH

G1-5



HEADSTART

ELC1 - ELC 3

The AAIS Path (पथ)

HEADSTART: ELC1 - ELC 3

Nurturing young minds with our Early Learning Center's Headstart program. Watch them thrive in a nurturing environment tailored for their growth. A foundation built for a lifetime of learning.

LAUNCH: G1-5

Propel your child's education journey with our dynamic Grades 1-5 Launch program. We lay the foundation for a love of learning that lasts a lifetime. We inspire curiosity and creativity in a supportive learning environment.

EMBARK: G6-8

Middle School is a journey of self-discovery. Our Grades 6-8 Embark program guides students as they explore new horizons, fostering independence and critical thinking.

AMPLIFY: G9-10

Elevate education in High School! Grades 9-10 Amplify program focuses on enriching academic experiences and preparing students for success in college and beyond.

ASCEND: G11-12

Senior years are the pinnacle of achievement. Our Grades 11-12 Ascend program propels students toward graduation and prepares them for the challenges of the future.

ENROLMENT PROCEDURE

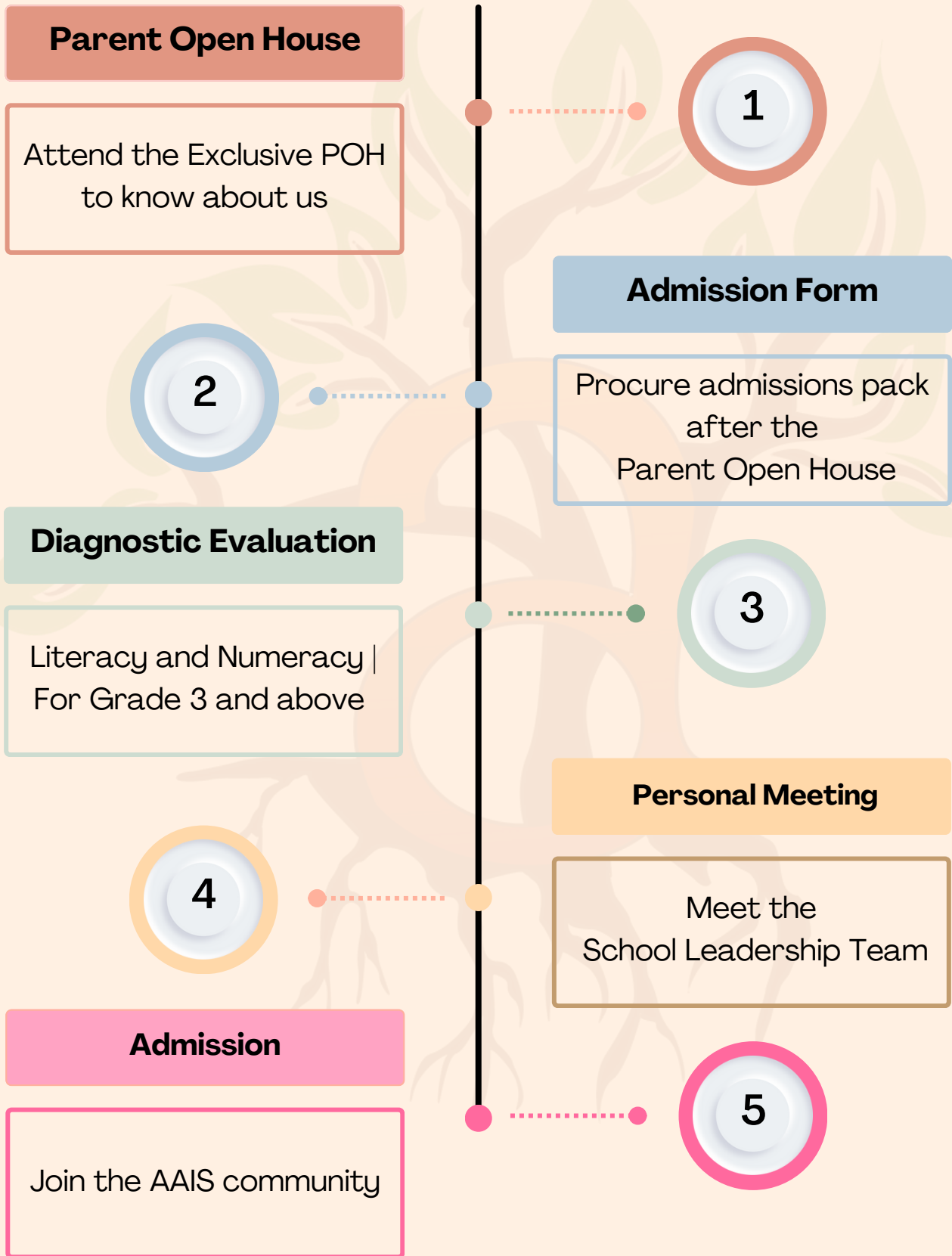
We aim to provide a simple, clear, easy and straightforward process to enrol your ward at Akshar Arbol International School (AAIS).

Typically, for students from Chennai, the admission process takes 2 - 4 working days, while for outstation/overseas students the process takes 5 - 8 working days.

We seek your cooperation and timely response to ensure the process is completed within the defined timeline.

In order to get to know us better, we strongly recommend that the family of the applicant(s) attend the AAIS Parent Open House before submitting the Application form

Step-by-step Process of the Admission procedure



Frequently Asked Questions

1. What board/curriculum does AAIS offer?

Campus	Grades	Program
TNG & ECR	ELC1 - Grade 5	<u>International Baccalaureate Primary Years Programme (IB PYP)</u>
TNG & ECR	Grade 6 - Grade 10	<u>Cambridge Lower Secondary and Cambridge IGCSE</u>
TNG	Grade 11 & 12	<u>Cambridge AS/A</u>
ECR	Grade 11 & 12	<u>International Baccalaureate Diploma Programme (IB DP)</u>

2. Currently, which grades do you offer?

AAIS is a full-fledged K-12 School, at both our campuses. For more details on the programme we offer, read the section on Academics on our website.

3. Do you offer Summer Programs on campus for students?

At present, we do not offer any summer programmes. However, we offer a wide variety of After-School activities. For more information on our After-School Programmes, do read the section on After-School in the Community Section of our website.

4. What are the School timings?

Grade	Timings
ELC 1, ELC 2	9:10 AM - 12:15 PM*
ELC 3	8:10 AM - 3:00 PM
Grades 1 - 5	8:10 AM - 3:00 PM
Grades 6 - 12	8:10 AM - 3:00 PM

* Extended timings available for ELC1 & ELC2

- Students of ELC1 - Grade 5 work from Monday to Friday.
- Students of Grade 6 - Grade 12 work one Saturday a month, to engage in various Sports Activities and House Competitions; in addition to their schedule from Mondays to Fridays.

5. What indoor and outdoor games does the School offer?

A variety of games and sports are offered as a part of the School's Physical Education Programme. The focus of the Sports Programme is to build age-appropriate Physical Education skills of Balance, Endurance, Strength, Flexibility and Coordination, as well as to build skills in Collaboration and Teamwork through Sports.

Students have access to the football field, cricket nets, Basketball and throwball courts.

6. What co-curricular activities does the School offer?

As part of our Curriculum, we integrate Performing Arts (Music, Theatre); Visual Arts and Physical Education, along with academic subjects, to deliver a holistic curriculum. These are offered as part of the School Timetable from ELC 1 to Grade 8. From Grade 9 onwards, subjects such as Art & Design / Visual Arts / Sports are offered as courses for study towards the Grade 10 or Grade 12 qualification.

7. Is there a prescribed School uniform?

- We believe that a School uniform nurtures a sense of oneness and builds a sense of identity in students and we also believe that it must be simple, free from gender bias, comfortable, and appealing across all age groups. Hence, we worked along with our Senior Students, designers and merchandisers of a leading fashion brand, on the colour, material, texture and cut; to custom make it, in their specialised factory.
- The uniforms are in two colours : Green - Grey (Regular Uniforms) and Orange - Grey (P.E uniforms). Students wear their regular or PE uniform on specific days mentioned.
- Students of ELC (Early Learning Centre) wear the School uniform for approximately three days a week. On other days, they are encouraged to come in comfortable wear, on the basis of the weather conditions.
- Students are required to wear the uniform while representing the School in any forum outside of School; unless it is a formal occasion, where a specific dress code has been prescribed.

8. What is the Student : Teacher ratio? How many sections do you have?

We believe in small class sizes, as this is required to foster an Inquiry-based Curriculum and pedagogy. The student:teacher ratio is about 1:12 in younger grades and about 1:24 in older grades. we are a one-section School from ELC1 to Grade 12

This helps us to keep learning personalised, while encouraging collaboration and fostering social development.

9. Do you have any International staff at AAIS?

Our staff come from diverse backgrounds – ethnicity, nationality, qualifications, having lived and worked in various parts of the world. Many of our teachers are of Indian origin, while we have some teachers of foreign ethnicity. What we look for in all our teachers is International Mindedness, a growth mindset and a professional approach to teaching. Regular and ongoing Professional Learning is the hallmark of a teacher at AAIS and the School has a regular round-the-year Professional Learning Programme that all Staff participate in.

10. Does the School provide transport?

- **Transport service is an optional service facilitated and outsourced by the School for the convenience of its students. Presently, we have our own transport (Yellow School Vans) that provides the service on specific routes. Post admission, the Admin Team will assist in organising Transportation.**
- **Safety measures are complied with and convenience of the students has been considered in the planning.**

11. What access do students have, to digital gadgets?

- **Classrooms and Learning Spaces are equipped with hardware such as desktops, projectors, laptops, tablets and headphones, for teacher and student use. Students are taught to use various apps on the devices and use the hardware for a variety of learning activities such as research, presentation, collaboration and communication.**
- **From Grade 9 onwards, the School has a BYOD (Bring Your Own Device) Policy.**
- **All students are registered through the firewall to ensure safety and privacy; and devices are used by all students under adult supervision, at all times.**
- **Students are also coached in responsible Digital Citizenship.**

12. What are the safety measures for students on campus?

- The foremost priority on campus is to provide a safe and nurturing environment. Students are supervised at all times. Teachers and other staff take responsibility for student safety at all times, both on Campus and during Field Trips.
- All measures towards electrical, fire safety and sanitary standards are complied with at all times. Each of the campuses is registered with a nearby medical centre or hospital and the nearby Police Station, which are intimated, in case of an emergency.
- The School also has safety policies with a committed set of Staff who are committed to it.

13. When should I submit an application for admission?

- AAIS has a rolling Admission Policy. Students can join anytime during the year, provided there is a vacancy in the grade applied to, as we have small classroom sizes.
- However, we recommend that for a start-of-academic-year admission, you begin the process in November of the previous year and complete it within two weeks, to ensure an assured seat.

CLICK & FOLLOW US TO STAY UPDATED!

